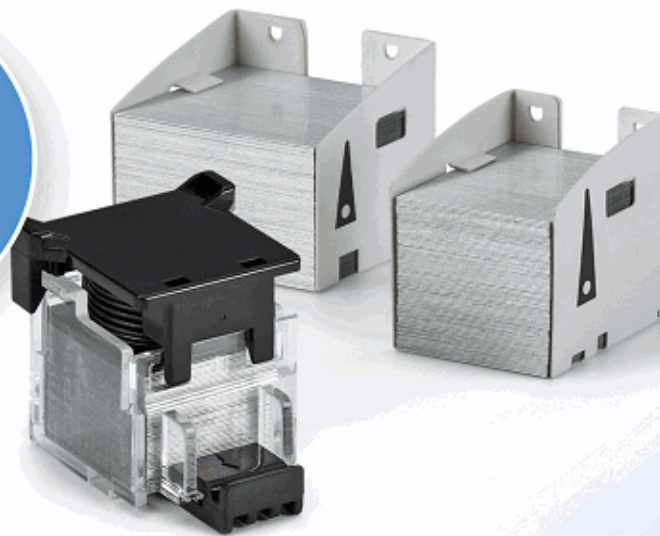


STAPLE CARTRIDGE

Cross-Reference Guide

FOR
COPIERS
& MFPS

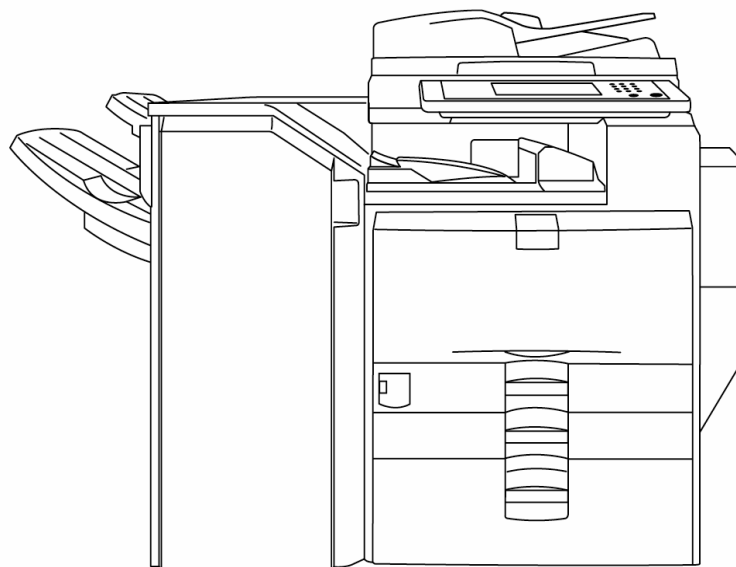


Europe 2025

Swingline®

IMPORTANT NOTE: In order to purchase the correct staples for your machine, it is important that you reference the **FINISHER** Model Identification Number. **DO NOT purchase staples based on the copier model number alone.**

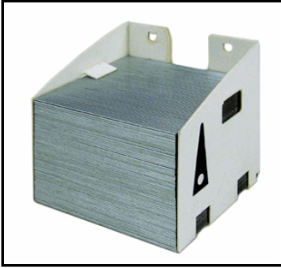
To locate the FINISHER Model Identification Number, first identify the finisher unit in relation to the copier unit. In most instances you will need to separate the finisher unit from the copier unit to access the model information. The location of the FINISHER Model Identification Number will vary depending on the model manufacturer.



Finisher Unit

Copier/MFP Unit

Canon



Katun Part Number

37414

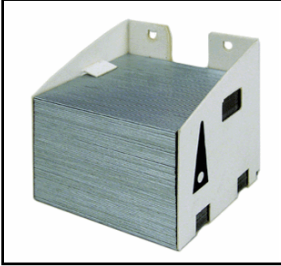
Type Size (mm)
G1 35x40x35

Your Price:

Finisher	Model	OEM Part Number	
FINISHER-A1		6788A001AA	STAPLE-G1
	IR ADVANCE C 2220	✓	✓
	IR ADVANCE C 5030	✓	✓
	IR ADVANCE C 5035	✓	✓
	IR ADVANCE C 5045	✓	✓
	IR ADVANCE C 5051	✓	✓
	IR ADVANCE C 9060	✓	✓
	IR ADVANCE C 9065	✓	✓
	IR ADVANCE C 9070	✓	✓
	IR ADVANCE C 9075	✓	✓
FINISHER-K1		6788A001AA	STAPLE-G1
	IR 105	✓	✓
	IR 7200	✓	✓
	IR 85	✓	✓
	IR 8500	✓	✓
	IR ADVANCE C 3520	✓	✓
	IR ADVANCE C 3525	✓	✓
	IR ADVANCE C 3530	✓	✓
	IR ADVANCE C 7260	✓	✓
	IR ADVANCE C 7270	✓	✓
	IR ADVANCE C 7280	✓	✓
	IR ADVANCE C 9270	✓	✓
	IR ADVANCE C 9280	✓	✓
	IR ADVANCE DX C 3725	✓	✓
	IR ADVANCE DX C 3730	✓	✓
	IR C 2100	✓	✓
FINISHER-K1 N		6788A001AA	STAPLE-G1
	IR 105	✓	✓
	IR 7200	✓	✓
	IR 8070	✓	✓
	IR 85	✓	✓
	IR 8500	✓	✓
		IR 9070	✓
	IR C 2100	✓	✓
FINISHER-K2		6788A001AA	STAPLE-G1
	IR 105	✓	✓
	IR 7200	✓	✓
	IR 85	✓	✓
	IR 8500	✓	✓
FINISHER-K2 N		6788A001AA	STAPLE-G1
	IR 105	✓	✓
	IR 7200	✓	✓
	IR 8070	✓	✓
	IR 85	✓	✓
	IR 8500	✓	✓
	IR 9070	✓	✓
FINISHER-N1		6788A001AA	STAPLE-G1
	CLC 2620	✓	✓
	CLC 3200	✓	✓
	CLC 3220	✓	✓
	IR ADVANCE 8205	✓	✓
	IR ADVANCE 8285	✓	✓
	IR ADVANCE 8295	✓	✓
	IR C 2620	✓	✓
	IR C 3200	✓	✓

**This document does not constitute an agreement for a price or sale. Prices shown are subject to change without notice. Contact your Katun sales representative for the current pricing information.

Canon



Katun Part Number

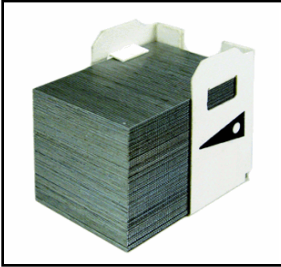
37414

Type	Size (mm)
G1	35x40x35

Your Price:

Finisher	Model	OEM Part Number	
FINISHER-N1	IR C 3220	6788A001AA	STAPLE-G1
	S 3200	✓	✓
SADDLE FINISHER K3		6788A001AA	STAPLE-G1
	IR 105	✓	✓
	IR 7200	✓	✓
	IR 85	✓	✓
	IR 8500	✓	✓
SADDLE FINISHER K3 N		6788A001AA	STAPLE-G1
	IR 105	✓	✓
	IR 7200	✓	✓
	IR 8070	✓	✓
	IR 85	✓	✓
	IR 8500	✓	✓
	IR 9070	✓	✓

Canon



Katun Part Number

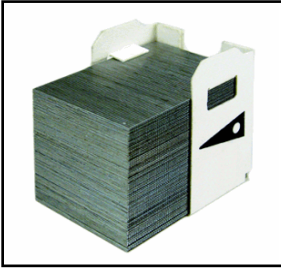
37416

Type Size (mm)
J1 35x28x33

Your Price:

Finisher	Model	OEM Part Number			
		6707A001AA	6707A001AC	6707A001AD	STAPLE-J1
FINISHER-A1	IR ADVANCE C 2220	✓	✓	✓	✓
	IR ADVANCE C 5030	✓	✓	✓	✓
	IR ADVANCE C 5035	✓	✓	✓	✓
	IR ADVANCE C 5045	✓	✓	✓	✓
	IR ADVANCE C 5051	✓	✓	✓	✓
	IR ADVANCE C 9060	✓	✓	✓	✓
	IR ADVANCE C 9065	✓	✓	✓	✓
	IR ADVANCE C 9070	✓	✓	✓	✓
	IR ADVANCE C 9075	✓	✓	✓	✓
FINISHER-AA1	IR ADVANCE C 3520	✓	✓	✓	✓
	IR ADVANCE C 3525	✓	✓	✓	✓
	IR ADVANCE C 3530	✓	✓	✓	✓
	IR ADVANCE DX C 3725	✓	✓	✓	✓
	IR ADVANCE DX C 3730	✓	✓	✓	✓
FINISHER-AB1	IMAGEPRESS C 6000	✓	✓	✓	✓
	IR ADVANCE DX 6860	✓	✓	✓	✓
	IR ADVANCE DX 6870	✓	✓	✓	✓
	IR ADVANCE DX C 5840	✓	✓	✓	✓
	IR ADVANCE DX C 5850	✓	✓	✓	✓
	IR ADVANCE DX C 5860	✓	✓	✓	✓
	IR ADVANCE DX C 5870	✓	✓	✓	✓
FINISHER-AC1	IR ADVANCE DX C 359	✓	✓	✓	✓
	IR ADVANCE DX C 7765	✓	✓	✓	✓
	IR ADVANCE DX C 7770	✓	✓	✓	✓
	IR ADVANCE DX C 7780	✓	✓	✓	✓
	IR C 5058	✓	✓	✓	✓
IR C 5068	✓	✓	✓	✓	
FINISHER-AD1	IR 5050	✓	✓	✓	✓
	IR 5055	✓	✓	✓	✓
	IR 5065	✓	✓	✓	✓
	IR 5075	✓	✓	✓	✓
FINISHER-C1	GP 285	✓	✓	✓	✓
	GP 335	✓	✓	✓	✓
	GP 405	✓	✓	✓	✓
	IR 2016	✓	✓	✓	✓
	IR 2018	✓	✓	✓	✓
	IR 2020	✓	✓	✓	✓
	IR 2022	✓	✓	✓	✓
	IR 2025	✓	✓	✓	✓
	IR 2030	✓	✓	✓	✓
	IR 2318	✓	✓	✓	✓
	IR 2320	✓	✓	✓	✓
	IR 400	✓	✓	✓	✓
	IR ADVANCE C 2020	✓	✓	✓	✓
	IR ADVANCE C 2025	✓	✓	✓	✓
	IR ADVANCE C 2030	✓	✓	✓	✓
	IR ADVANCE C 5030	✓	✓	✓	✓
	IR ADVANCE C 5035	✓	✓	✓	✓
	IR ADVANCE C 5045	✓	✓	✓	✓
	IR ADVANCE C 5051	✓	✓	✓	✓

Canon



Katun Part Number

37416

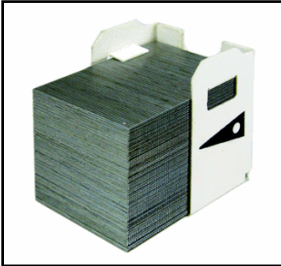
Type Size (mm)
J1 35x28x33

Your Price:

Finisher	Model	OEM Part Number				
		6707A001AA	6707A001AC	6707A001AD	STAPLE-J1	
FINISHER- E1	GP 285	✓	✓	✓	✓	
	GP 335	✓	✓	✓	✓	
	GP 405	✓	✓	✓	✓	
	IR 400	✓	✓	✓	✓	
	IR ADVANCE 6055	✓	✓	✓	✓	
	IR ADVANCE 6065	✓	✓	✓	✓	
	IR ADVANCE 6075	✓	✓	✓	✓	
	IR ADVANCE C 5235	✓	✓	✓	✓	
	IR ADVANCE C 5240	✓	✓	✓	✓	
	IR ADVANCE C 5250	✓	✓	✓	✓	
	IR ADVANCE C 5255	✓	✓	✓	✓	
	FINISHER- J1	IR 2200	✓	✓	✓	✓
IR 2220		✓	✓	✓	✓	
IR 2625		✓	✓	✓	✓	
IR 2630		✓	✓	✓	✓	
IR 2645		✓	✓	✓	✓	
IR 2800		✓	✓	✓	✓	
IR 3300		✓	✓	✓	✓	
IR ADVANCE 4525		✓	✓	✓	✓	
IR ADVANCE 4535		✓	✓	✓	✓	
IR ADVANCE 4545		✓	✓	✓	✓	
IR ADVANCE 4551		✓	✓	✓	✓	
IR ADVANCE C 5235		✓	✓	✓	✓	
IR ADVANCE C 5240		✓	✓	✓	✓	
IR ADVANCE DX 4725		✓	✓	✓	✓	
IR ADVANCE DX 4735		✓	✓	✓	✓	
IR ADVANCE DX 4745		✓	✓	✓	✓	
IR ADVANCE DX 4751		✓	✓	✓	✓	
FINISHER- L1		IR 1600	✓	✓	✓	✓
	IR 2000	✓	✓	✓	✓	
	IR 2010	✓	✓	✓	✓	
	IR 2735	✓	✓	✓	✓	
	IR 2745	✓	✓	✓	✓	
	IR 2925	✓	✓	✓	✓	
	IR 2930	✓	✓	✓	✓	
	IR 2945	✓	✓	✓	✓	
	IR ADVANCE C 7260	✓	✓	✓	✓	
	IR ADVANCE C 7270	✓	✓	✓	✓	
	IR ADVANCE C 7280	✓	✓	✓	✓	
	IR ADVANCE DX 4825	✓	✓	✓	✓	
	IR ADVANCE DX 4835	✓	✓	✓	✓	
	IR ADVANCE DX 4845	✓	✓	✓	✓	
	IR ADVANCE DX 4925	✓	✓	✓	✓	
	IR ADVANCE DX 4935	✓	✓	✓	✓	
	IR ADVANCE DX 4945	✓	✓	✓	✓	
	IR ADVANCE DX 6860	✓	✓	✓	✓	
	IR ADVANCE DX 6870	✓	✓	✓	✓	
	IR ADVANCE DX C 3922	✓	✓	✓	✓	
	IR ADVANCE DX C 3926	✓	✓	✓	✓	
	IR ADVANCE DX C 3930	✓	✓	✓	✓	
	IR ADVANCE DX C 3935	✓	✓	✓	✓	
	IR ADVANCE DX C 5840	✓	✓	✓	✓	
	IR ADVANCE DX C 5850	✓	✓	✓	✓	
	IR ADVANCE DX C 5860	✓	✓	✓	✓	
	IR C 3226	✓	✓	✓	✓	
	IR C 3326	✓	✓	✓	✓	
	FINISHER- P1	IR 2570	✓	✓	✓	✓
		IR 3170	✓	✓	✓	✓
IR ADVANCE 6255		✓	✓	✓	✓	
IR ADVANCE 6265		✓	✓	✓	✓	
IR ADVANCE 6275		✓	✓	✓	✓	

**This document does not constitute an agreement for a price or sale. Prices shown are subject to change without notice. Contact your Katun sales representative for the current pricing information.

Canon



Katun Part Number

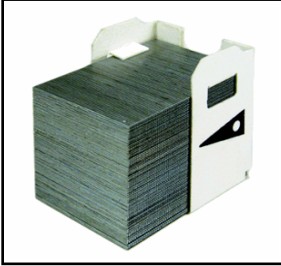
37416

Type Size (mm)
J1 35x28x33

Your Price:

Finisher	Model	OEM Part Number			
		6707A001AA	6707A001AC	6707A001AD	STAPLE-J1
FINISHER-P1	IR ADVANCE 8205	✓	✓	✓	✓
	IR ADVANCE 8285	✓	✓	✓	✓
	IR ADVANCE 8295	✓	✓	✓	✓
	IR C 3100	✓	✓	✓	✓
	IR C 3180	✓	✓	✓	✓
FINISHER-Q3		6707A001AA	6707A001AC	6707A001AD	STAPLE-J1
	IR 2270	✓	✓	✓	✓
	IR 2570	✓	✓	✓	✓
	IR 2870	✓	✓	✓	✓
	IR 3170	✓	✓	✓	✓
	IR 3570	✓	✓	✓	✓
	IR 4570	✓	✓	✓	✓
	IR C 2570	✓	✓	✓	✓
	IR C 3170	✓	✓	✓	✓
	IR C 3180	✓	✓	✓	✓
FINISHER-R1		6707A001AA	6707A001AC	6707A001AD	STAPLE-J1
	IR 6870	✓	✓	✓	✓
	IR 7086	✓	✓	✓	✓
	IR 7095	✓	✓	✓	✓
	IR 7105	✓	✓	✓	✓
	IR ADVANCE 400	✓	✓	✓	✓
	IR ADVANCE 500	✓	✓	✓	✓
	IR C 5800	✓	✓	✓	✓
	IR C 5870	✓	✓	✓	✓
	IR C 5880	✓	✓	✓	✓
	IR C 6800	✓	✓	✓	✓
	IR C 6870	✓	✓	✓	✓
	IR C 6880	✓	✓	✓	✓
FINISHER-S1		6707A001AA	6707A001AC	6707A001AD	STAPLE-J1
	IR 2230	✓	✓	✓	✓
	IR 2270	✓	✓	✓	✓
	IR 2830	✓	✓	✓	✓
	IR 2870	✓	✓	✓	✓
	IR 3025	✓	✓	✓	✓
	IR 3030	✓	✓	✓	✓
	IR 3035	✓	✓	✓	✓
	IR 3045	✓	✓	✓	✓
	IR 3225	✓	✓	✓	✓
	IR 3230	✓	✓	✓	✓
	IR 3235	✓	✓	✓	✓
	IR 3245	✓	✓	✓	✓
	IR 3530	✓	✓	✓	✓
	IR 3570	✓	✓	✓	✓
	IR 4570	✓	✓	✓	✓
	IR ADVANCE C 250	✓	✓	✓	✓
IR ADVANCE C 350	✓	✓	✓	✓	
IR ADVANCE C 351	✓	✓	✓	✓	
FINISHER-T1		6707A001AA	6707A001AC	6707A001AD	STAPLE-J1
	IR 5570	✓	✓	✓	✓
FINISHER-U1		6707A001AA	6707A001AC	6707A001AD	STAPLE-J1
	IR 2016	✓	✓	✓	✓
	IR 2020	✓	✓	✓	✓
	IR ADVANCE C 3320	✓	✓	✓	✓
	IR ADVANCE C 3325	✓	✓	✓	✓
IR ADVANCE C 3330	✓	✓	✓	✓	

Canon



Katun Part Number

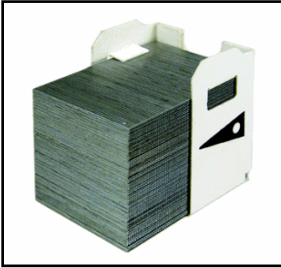
37416

Type Size (mm)
J1 35x28x33

Your Price:

Finisher	Model	OEM Part Number			
		6707A001AA	6707A001AC	6707A001AD	STAPLE-J1
FINISHER-U2	IR 2018	✓	✓	✓	✓
	IR 2022	✓	✓	✓	✓
	IR 2025	✓	✓	✓	✓
	IR 2030	✓	✓	✓	✓
	IR 2318	✓	✓	✓	✓
	IR 2320	✓	✓	✓	✓
	IR 2420	✓	✓	✓	✓
	IR 2422	✓	✓	✓	✓
FINISHER-X1	CLC 4040	✓	✓	✓	✓
	CLC 5151	✓	✓	✓	✓
	IR ADVANCE 8505	✓	✓	✓	✓
	IR ADVANCE 8585	✓	✓	✓	✓
	IR ADVANCE 8595	✓	✓	✓	✓
	IR ADVANCE C 7565	✓	✓	✓	✓
	IR ADVANCE C 7570	✓	✓	✓	✓
	IR ADVANCE C 7580	✓	✓	✓	✓
	IR ADVANCE DX 8705	✓	✓	✓	✓
	IR ADVANCE DX 8786	✓	✓	✓	✓
	IR ADVANCE DX 8795	✓	✓	✓	✓
	IR ADVANCE DX C 7765	✓	✓	✓	✓
	IR ADVANCE DX C 7770	✓	✓	✓	✓
	IR ADVANCE DX C 7780	✓	✓	✓	✓
	IR C 4080	✓	✓	✓	✓
	IR C 4580	✓	✓	✓	✓
	IR C 5180	✓	✓	✓	✓
IR C 5185	✓	✓	✓	✓	
FINISHER-Z1	IR ADVANCE C 255	✓	✓	✓	✓
	IR ADVANCE C 256	✓	✓	✓	✓
	IR ADVANCE C 355	✓	✓	✓	✓
	IR ADVANCE C 356	✓	✓	✓	✓
	IR ADVANCE DX C 257	✓	✓	✓	✓
	IR ADVANCE DX C 259	✓	✓	✓	✓
	IR ADVANCE DX C 357	✓	✓	✓	✓
	IR ADVANCE DX C 359	✓	✓	✓	✓
	IR C 2880	✓	✓	✓	✓
	IR C 3080	✓	✓	✓	✓
IR C 3380	✓	✓	✓	✓	
SADDLE FINISHER AE2	IR 3025	✓	✓	✓	✓
	IR 3030	✓	✓	✓	✓
	IR 3035	✓	✓	✓	✓
	IR 3045	✓	✓	✓	✓
	IR 3225	✓	✓	✓	✓
	IR 3230	✓	✓	✓	✓
	IR 3235	✓	✓	✓	✓
	IR 3245	✓	✓	✓	✓
SADDLE FINISHER G1	IR 2200	✓	✓	✓	✓
	IR 2220	✓	✓	✓	✓
	IR 2800	✓	✓	✓	✓
	IR 3300	✓	✓	✓	✓
	IR 85	✓	✓	✓	✓
	IR 8500	✓	✓	✓	✓
SADDLE FINISHER Q2	IR C 3100	✓	✓	✓	✓
	IR C 3170	✓	✓	✓	✓

Canon



Katun Part Number

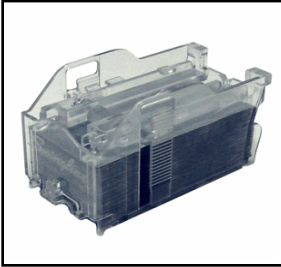
37416

Type: J1 Size (mm): 35x28x33

Your Price:

Finisher	Model	OEM Part Number			
SADDLE FINISHER Q4		6707A001AA	6707A001AC	6707A001AD	STAPLE-J1
	IR 2270	✓	✓	✓	✓
	IR 2570	✓	✓	✓	✓
	IR 2870	✓	✓	✓	✓
	IR 3170	✓	✓	✓	✓
	IR C 2570	✓	✓	✓	✓
SADDLE FINISHER R2		6707A001AA	6707A001AC	6707A001AD	STAPLE-J1
	IR 6870	✓	✓	✓	✓
	IR C 5800	✓	✓	✓	✓
	IR C 5880	✓	✓	✓	✓
	IR C 6800	✓	✓	✓	✓
	IR C 6870	✓	✓	✓	✓
SADDLE FINISHER		6707A001AA	6707A001AC	6707A001AD	STAPLE-J1
	IR 5570	✓	✓	✓	✓
SADDLE FINISHER W2		6707A001AA	6707A001AC	6707A001AD	STAPLE-J1
	CLC 4040	✓	✓	✓	✓
	CLC 5151	✓	✓	✓	✓
	IR C 5185	✓	✓	✓	✓

Canon



Katun Part Number

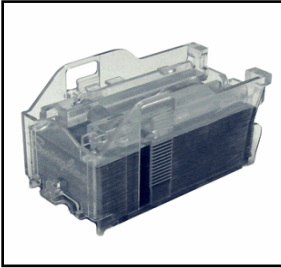
37664

Type Size (mm)
P1 61.5x33x34

Your Price:

Finisher	Model	OEM Part Number	
FINISHER-A1		1008B001AA	STAPLE-P1
	IR ADVANCE C 2220	✓	✓
	IR ADVANCE C 5030	✓	✓
	IR ADVANCE C 5035	✓	✓
	IR ADVANCE C 5045	✓	✓
	IR ADVANCE C 5051	✓	✓
	IR ADVANCE C 9060	✓	✓
	IR ADVANCE C 9065	✓	✓
	IR ADVANCE C 9070	✓	✓
FINISHER-AE1		1008B001AA	STAPLE-P1
	IR 3025	✓	✓
	IR 3030	✓	✓
	IR 3035	✓	✓
	IR 3045	✓	✓
	IR 3225	✓	✓
	IR 3230	✓	✓
	IR 3235	✓	✓
	IR 3245	✓	✓
	IR ADVANCE DX 4925	✓	✓
	IR ADVANCE DX 4935	✓	✓
	IR ADVANCE DX 4945	✓	✓
	IR ADVANCE DX C 3922	✓	✓
	IR ADVANCE DX C 3926	✓	✓
	IR ADVANCE DX C 3930	✓	✓
	IR ADVANCE DX C 3935	✓	✓
FINISHER-D1		1008B001AA	STAPLE-P1
	GP 555	✓	✓
	GP 605	✓	✓
	GP 605P	✓	✓
	IR 550	✓	✓
	IR 600	✓	✓
	IR ADVANCE 4025	✓	✓
	IR ADVANCE 4035	✓	✓
	IR ADVANCE 4045	✓	✓
	IR ADVANCE 4051	✓	✓
	IR ADVANCE 4225	✓	✓
	IR ADVANCE 4235	✓	✓
	IR ADVANCE 4245	✓	✓
	IR ADVANCE 4251	✓	✓
	IR ADVANCE 8085	✓	✓
	IR ADVANCE 8095	✓	✓
IR ADVANCE 8105	✓	✓	
FINISHER-K1		1008B001AA	STAPLE-P1
	IR 105	✓	✓
	IR 7200	✓	✓
	IR 85	✓	✓
	IR 8500	✓	✓
	IR ADVANCE C 3520	✓	✓
	IR ADVANCE C 3525	✓	✓
	IR ADVANCE C 3530	✓	✓
	IR ADVANCE C 7260	✓	✓
	IR ADVANCE C 7270	✓	✓
	IR ADVANCE C 7280	✓	✓
	IR ADVANCE C 9270	✓	✓
	IR ADVANCE C 9280	✓	✓
	IR ADVANCE DX C 3725	✓	✓
	IR ADVANCE DX C 3730	✓	✓
	IR C 2100	✓	✓

Canon



Katun Part Number

37664

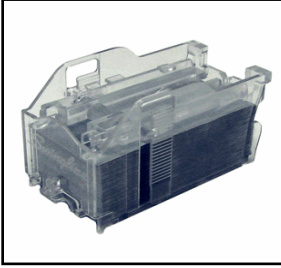
Type Size (mm)
P1 61.5x33x34

Your Price:

Finisher	Model	OEM Part Number	
		1008B001AA	STAPLE-P1
FINISHER- L1	IR 1600	✓	✓
	IR 2000	✓	✓
	IR 2010	✓	✓
	IR 2735	✓	✓
	IR 2745	✓	✓
	IR 2925	✓	✓
	IR 2930	✓	✓
	IR 2945	✓	✓
	IR ADVANCE C 7260	✓	✓
	IR ADVANCE C 7270	✓	✓
	IR ADVANCE C 7280	✓	✓
	IR ADVANCE DX 4825	✓	✓
	IR ADVANCE DX 4835	✓	✓
	IR ADVANCE DX 4845	✓	✓
	IR ADVANCE DX 4925	✓	✓
	IR ADVANCE DX 4935	✓	✓
	IR ADVANCE DX 4945	✓	✓
	IR ADVANCE DX 6860	✓	✓
	IR ADVANCE DX 6870	✓	✓
	IR ADVANCE DX C 3922	✓	✓
	IR ADVANCE DX C 3926	✓	✓
	IR ADVANCE DX C 3930	✓	✓
	IR ADVANCE DX C 3935	✓	✓
	IR ADVANCE DX C 5840	✓	✓
	IR ADVANCE DX C 5850	✓	✓
	IR ADVANCE DX C 5860	✓	✓
IR C 3226	✓	✓	
IR C 3326	✓	✓	
FINISHER- X1	CLC 4040	✓	✓
	CLC 5151	✓	✓
	IR ADVANCE 8505	✓	✓
	IR ADVANCE 8585	✓	✓
	IR ADVANCE 8595	✓	✓
	IR ADVANCE C 7565	✓	✓
	IR ADVANCE C 7570	✓	✓
	IR ADVANCE C 7580	✓	✓
	IR ADVANCE DX 8705	✓	✓
	IR ADVANCE DX 8786	✓	✓
	IR ADVANCE DX 8795	✓	✓
	IR ADVANCE DX C 7765	✓	✓
	IR ADVANCE DX C 7770	✓	✓
	IR ADVANCE DX C 7780	✓	✓
	IR C 4080	✓	✓
	IR C 4580	✓	✓
	IR C 5180	✓	✓
IR C 5185	✓	✓	
FINISHER- Z1	IR ADVANCE C 255	✓	✓
	IR ADVANCE C 256	✓	✓
	IR ADVANCE C 355	✓	✓
	IR ADVANCE C 356	✓	✓
	IR ADVANCE DX C 257	✓	✓
	IR ADVANCE DX C 259	✓	✓
	IR ADVANCE DX C 357	✓	✓
	IR ADVANCE DX C 359	✓	✓
	IR C 2880	✓	✓
	IR C 3080	✓	✓
	IR C 3380	✓	✓
	SADDLE FINISHER AB2		✓
IMAGEPRESS 1110		✓	✓
IMAGEPRESS 1125		✓	✓
IMAGEPRESS 1135		✓	✓

**This document does not constitute an agreement for a price or sale. Prices shown are subject to change without notice. Contact your Katun sales representative for the current pricing information.

Canon



Katun Part Number

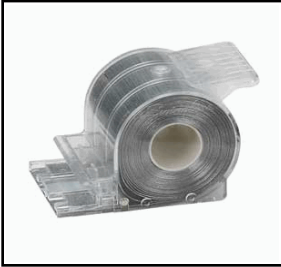
37664

Type	Size (mm)
P1	61.5x33x34

Your Price:

Finisher	Model	OEM Part Number	
SADDLE FINISHER AB2	IMAGEPRESS C 1	1008B001AA	STAPLE-P1
	IMAGEPRESS C 6000	✓	✓
	IMAGEPRESS C 7000	✓	✓
SADDLE FINISHER AD2		1008B001AA	STAPLE-P1
	IR 5050	✓	✓
	IR 5055	✓	✓
	IR 5065	✓	✓
	IR 5075	✓	✓
SADDLE FINISHER V2		1008B001AA	STAPLE-P1
	IR 7086	✓	✓
	IR 7095	✓	✓
	IR 7105	✓	✓

Canon



Katun Part Number

37796

Type Size (mm)
N1 76x46x46

Your Price:

Finisher	Model	OEM Part Number	
FINISHER-K1		1007B001AA	STAPLE-N1
	IR 105	✓	✓
	IR 7200	✓	✓
	IR 85	✓	✓
	IR 8500	✓	✓
	IR ADVANCE C 3520	✓	✓
	IR ADVANCE C 3525	✓	✓
	IR ADVANCE C 3530	✓	✓
	IR ADVANCE C 7260	✓	✓
	IR ADVANCE C 7270	✓	✓
	IR ADVANCE C 7280	✓	✓
	IR ADVANCE C 9270	✓	✓
	IR ADVANCE C 9280	✓	✓
	IR ADVANCE DX C 3725	✓	✓
IR ADVANCE DX C 3730	✓	✓	
IR C 2100	✓	✓	
FINISHER-Q1		1007B001AA	STAPLE-N1
	IR C 3100	✓	✓

Finisher	Model	OEM Part Number	
FINISHER-V1		1007B001AA	STAPLE-N1
	IR 7086	✓	✓
	IR 7095	✓	✓
	IR 7105	✓	✓
	IR ADVANCE 6555	✓	✓
	IR ADVANCE 6565	✓	✓
	IR ADVANCE 6575	✓	✓
	IR ADVANCE 8505	✓	✓
	IR ADVANCE 8585	✓	✓
	IR ADVANCE 8595	✓	✓
	IR ADVANCE C 7565	✓	✓
	IR ADVANCE C 7570	✓	✓
IR ADVANCE C 7580	✓	✓	

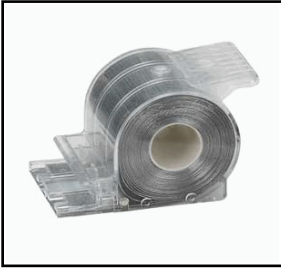
Finisher	Model	OEM Part Number	
FINISHER-V2		1007B001AA	STAPLE-N1
	IR ADVANCE 6555	✓	✓
	IR ADVANCE 6565	✓	✓
	IR ADVANCE 6575	✓	✓
	IR ADVANCE 8505	✓	✓
	IR ADVANCE 8585	✓	✓
	IR ADVANCE 8595	✓	✓
	IR ADVANCE C 7565	✓	✓
IR ADVANCE C 7570	✓	✓	
IR ADVANCE C 7580	✓	✓	

Finisher	Model	OEM Part Number	
FINISHER-W1		1007B001AA	STAPLE-N1
	CLC 4040	✓	✓
	CLC 5151	✓	✓
	IR ADVANCE 8505	✓	✓
	IR ADVANCE 8585	✓	✓
	IR ADVANCE 8595	✓	✓
	IR C 4080	✓	✓
	IR C 4580	✓	✓
IR C 5180	✓	✓	
IR C 5185	✓	✓	

Finisher	Model	OEM Part Number	
FINISHER-X1		1007B001AA	STAPLE-N1
	CLC 4040	✓	✓
	CLC 5151	✓	✓
	IR ADVANCE 8505	✓	✓
	IR ADVANCE 8585	✓	✓
IR ADVANCE 8595	✓	✓	

***This document does not constitute an agreement for a price or sale. Prices shown are subject to change without notice. Contact your Katun sales representative for the current pricing information.*

Canon



Katun Part Number

37796

Type	Size (mm)
N1	76x46x46

Your Price:

Finisher	Model	OEM Part Number	
FINISHER- X1	IR ADVANCE C 7565	1007B001AA	STAPLE-N1
	IR ADVANCE C 7570	✓	✓
	IR ADVANCE C 7580	✓	✓
	IR ADVANCE DX 8705	✓	✓
	IR ADVANCE DX 8786	✓	✓
	IR ADVANCE DX 8795	✓	✓
	IR ADVANCE DX C 7765	✓	✓
	IR ADVANCE DX C 7770	✓	✓
	IR ADVANCE DX C 7780	✓	✓
	IR C 4080	✓	✓
	IR C 4580	✓	✓
	IR C 5180	✓	✓
IR C 5185	✓	✓	
SADDLE FINISHER AB2		1007B001AA	STAPLE-N1
		✓	✓
	IMAGEPRESS 1110	✓	✓
	IMAGEPRESS 1125	✓	✓
	IMAGEPRESS 1135	✓	✓
	IMAGEPRESS C 1	✓	✓
	IMAGEPRESS C 6000	✓	✓
IMAGEPRESS C 7000	✓	✓	
SADDLE FINISHER V2		1007B001AA	STAPLE-N1
	IR 7086	✓	✓
	IR 7095	✓	✓
	IR 7105	✓	✓